



Swirl Diffuser – Variable Volume

Type TDF-V



Content overview

General Information	2
Technical Data	3
Order Details	4

General Information

Detail

The TDF-V range of high induction, variable volume Swirl diffusers have been designed to meet the most stringent requirements of new and refurbished commercial and industrial systems.

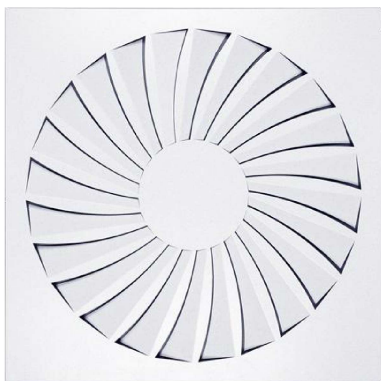
This versatile range of diffusers is supplied complete with a low profile body and radial front face plate, which is easily installed in inverted "T" type or plaster board ceilings.

The high induction and radial distribution achieved by the diffusers, even at minimum air quantities (no dumping) in variable volume applications, ensures efficient air distribution throughout the comfort zone of the room. The TDF-V thus eliminates stratification with warm supply air and assures a correct draught free distribution and "mixing" of colder air avoiding cold and warm areas. All moving parts are contained within the specially designed low profile body.

All components are thoroughly tested and adjusted in the TROX laboratories in Germany and South Africa, assuring the high quality and reliability of our products.

Available Options

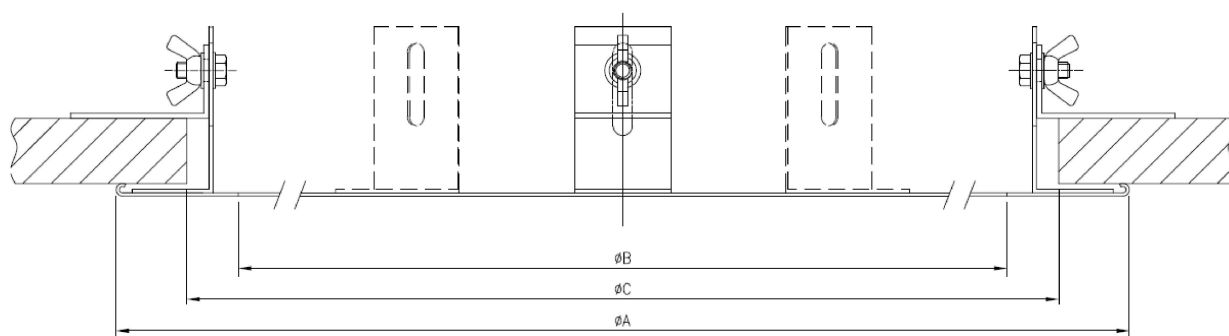
TDF-V-Q Construction



TDF-V-R Construction

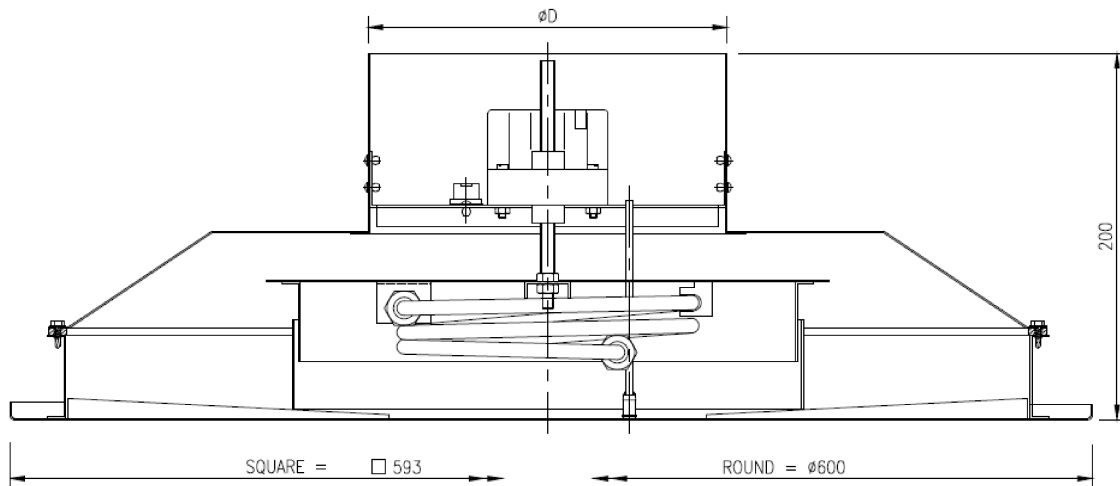


Installation Ring for TDF-C



TDF-V / 600	ØA = 665	ØB = 580	ØC = 620
--------------------	-----------------	-----------------	-----------------

Construction Dimensions



TDF-V / 600	$\varnothing = 200$	$\varnothing = 250$	$\varnothing = 300$
-------------	---------------------	---------------------	---------------------

Selection Data (Static Pressure Dependant)

TDF-V	Data	30 Pa	40 Pa	50 Pa	60 Pa	70 Pa
200	Flow (l/s)	122	141	160	174	189
	Throw (m)	2.5	2.8	3.1	3.4	3.7
	NC Level	28	31	34	38	41
250	Flow (l/s)	166	190	215	235	251
	Throw (m)	2.8	3.1	3.4	3.7	4.1
	NC Level	35	41	43	45	46
300	Flow (l/s)	196	226	252	277	301
	Throw (m)	3.1	3.4	3.7	4.1	4.5
	NC Level	40	43	46	51	53

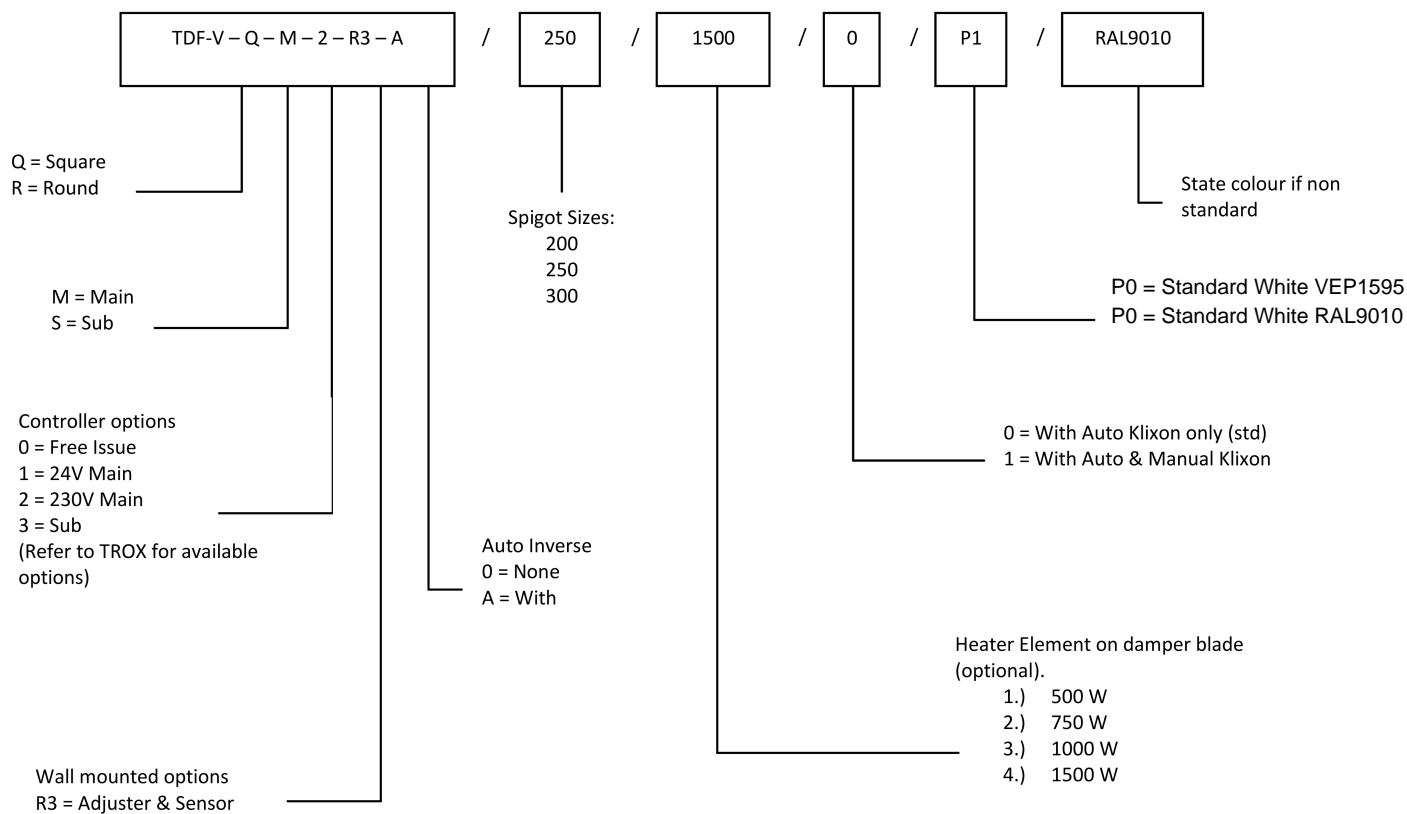
Throw: Distance from diffuser to point where the jet velocity is reduced to 0.25 m/s at maximum air volume.

NC: Figures are determined from power level data by deducting 8 dB from each octave band for room attenuation.

Note: These levels represent only the noise generated by the diffuser, and do not take into account any duct-borne noise.

Order Details

Order Details



TROX[®] TECHNIK
The art of handling air

TROX South Africa (Pty) Ltd.

10 Wigford Road
Masons Mill
Pietermaritzburg
Kwa-Zulu Natal
Tel: +27 (0) 33 398 1201
Fax: +27 (0) 33 398 1006
Email: pmb@troxsa.co.za
www.troxsa.co.za